



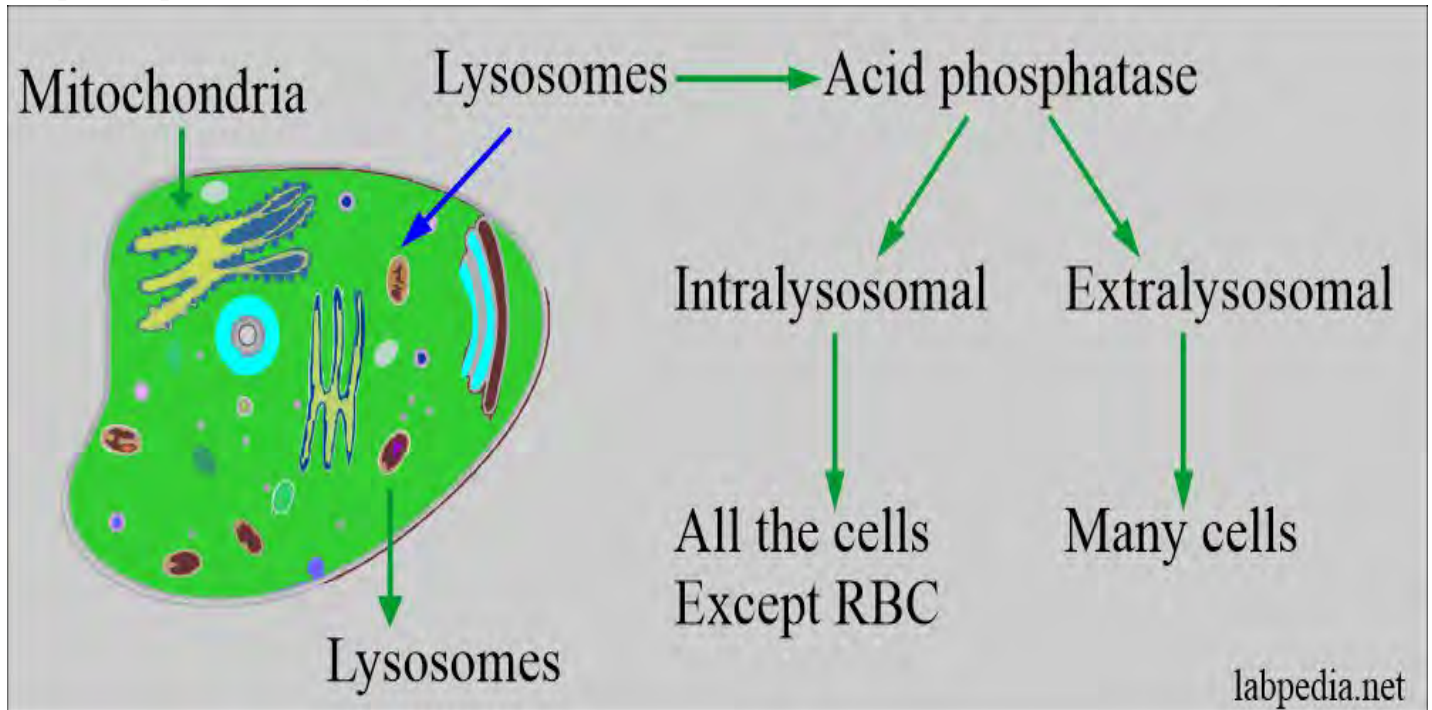
# Lab tests

Lab tests include all various clinical diagnostic laboratory work-up of the patients.

Search bar containing the text "copper" and a search icon on the right.

## Acid phosphatase and Prostatic phosphatase (https://labpedia.net/acid-phosphatase-ap-total-and-prostatic-...

Chemical pathology (https://labpedia.net/category/lab-tests/chemical-pathology/) Lab Tests (https://labpedia.net/category/lab-tests/)



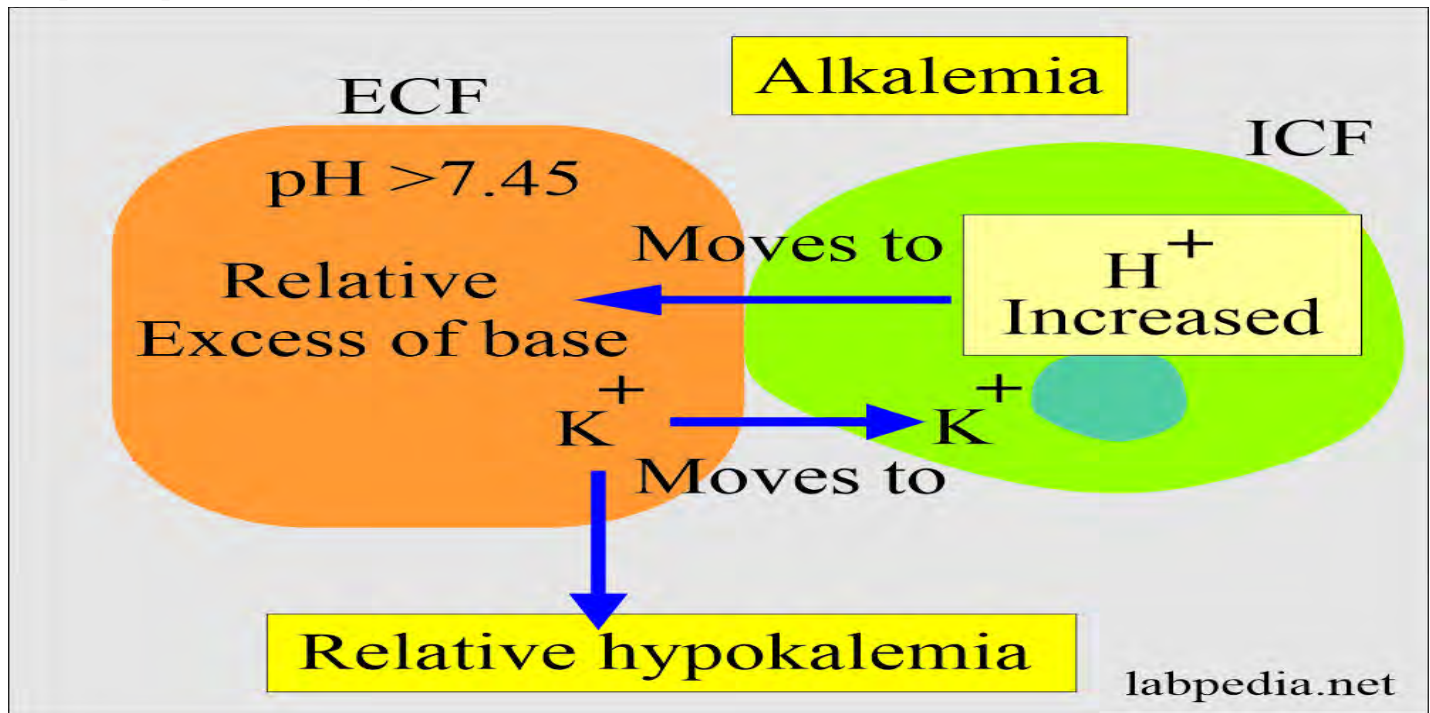
(https://labpedia.net/acid-phosphatase-ap-total-and-prostatic-phosphatase/)

Acid phosphatase and Prostatic phosphatase Sample It is done on the serum...

READ MORE (HTTPS://LABPEDIA.NET/ACID-PHOSPHATASE-AP-TOTAL-AND-PROSTATIC-PHOSPHATASE/)

## Acid-base Balance:- Part 1 – Introduction to the Acid-Base Balance (<https://labpedia.net/acid-base-balance-part-1-introduction-to-th...>)

Chemical pathology (<https://labpedia.net/category/lab-tests/chemical-pathology/>) | Lab Tests  
(<https://labpedia.net/category/lab-tests/>)



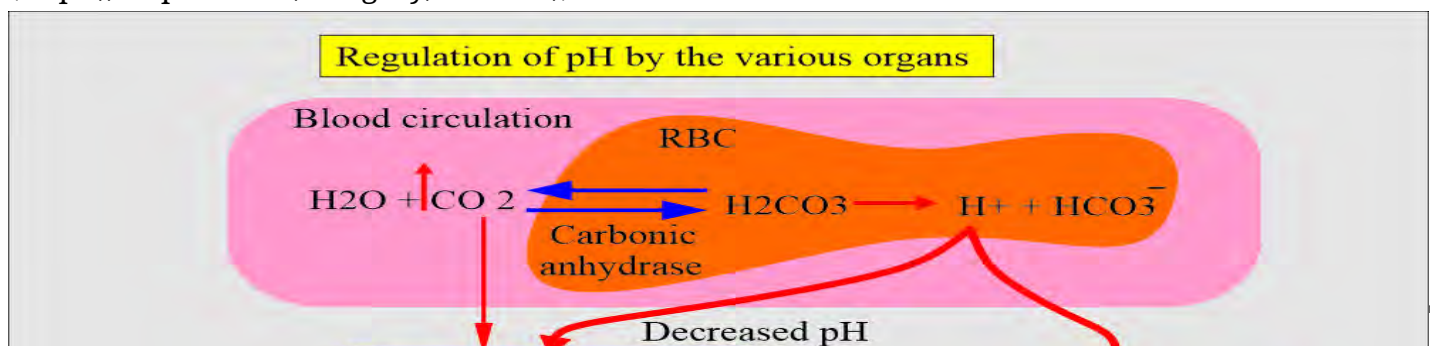
(<https://labpedia.net/acid-base-balance-part-1-introduction-to-the-acid-base-balance/>)

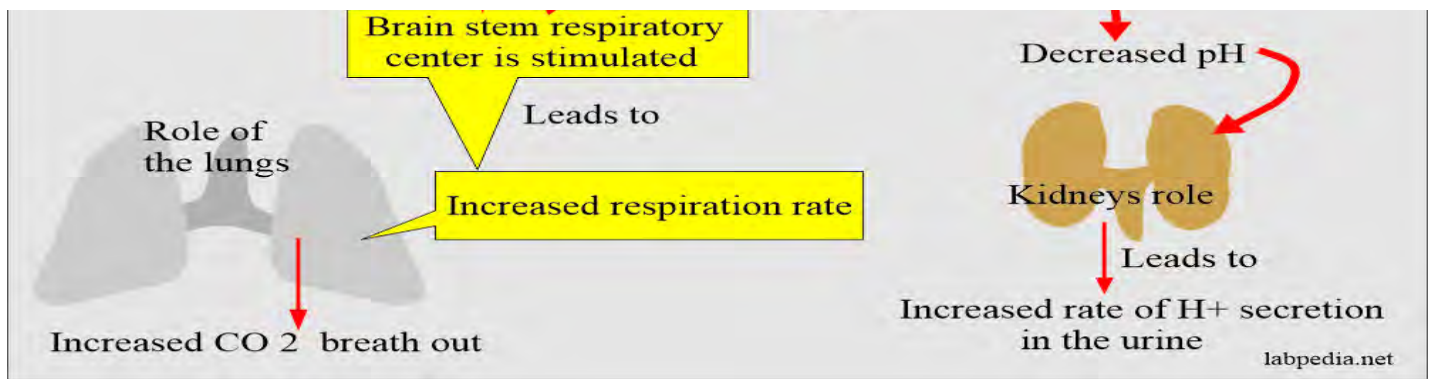
Definition of acid-base balance: This regulation of the extracellular fluid environment involves...

READ MORE ([HTTPS://LABPEDIA.NET/ACID-BASE-BALANCE-PART-1-INTRODUCTION-TO-THE-ACID-BASE-BALANCE/](https://labpedia.net/acid-base-balance-part-1-introduction-to-the-acid-base-balance/))

## Acid-base Balance:- Part 2 – Introduction of Acid-Base Balance, Metabolic acidosis, and Metabolic Alkalosis...

Chemical pathology (<https://labpedia.net/category/lab-tests/chemical-pathology/>) | Lab Tests  
(<https://labpedia.net/category/lab-tests/>)





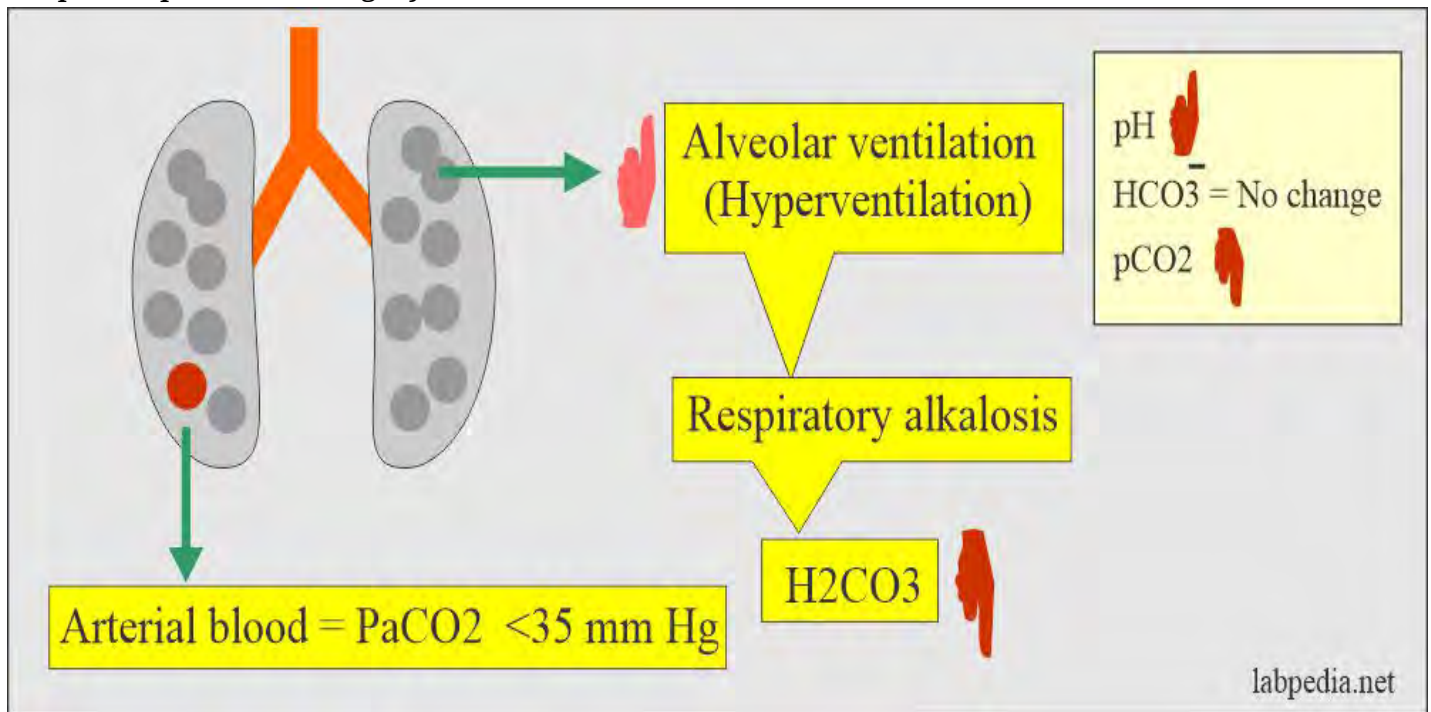
(<https://labpedia.net/acid-base-balance-part-2-introduction-of-acid-base-balance-metabolic-acidosis-and-metabolic-alkalosis/>)

Sample The better choice is the Radial artery. May take the sample...

READ MORE ([HTTPS://LABPEDIA.NET/ACID-BASE-BALANCE-PART-2-INTRODUCTION-OF-ACID-BASE-BALANCE-METABOLIC-ACIDOSIS-AND-METABOLIC-ALKALOSIS/](https://labpedia.net/acid-base-balance-part-2-introduction-of-acid-base-balance-metabolic-acidosis-and-metabolic-alkalosis/))

## Acid-base Balance:- Part 3 – Respiratory Acidosis and Respiratory Alkalosis (<https://labpedia.net/acid-base-balance-part-3-...>)

Chemical pathology (<https://labpedia.net/category/lab-tests/chemical-pathology/>) | Lab Tests  
(<https://labpedia.net/category/lab-tests/>)



(<https://labpedia.net/acid-base-balance-part-3-respiratory-acidosis-and-respiratory-alkalosis/>)

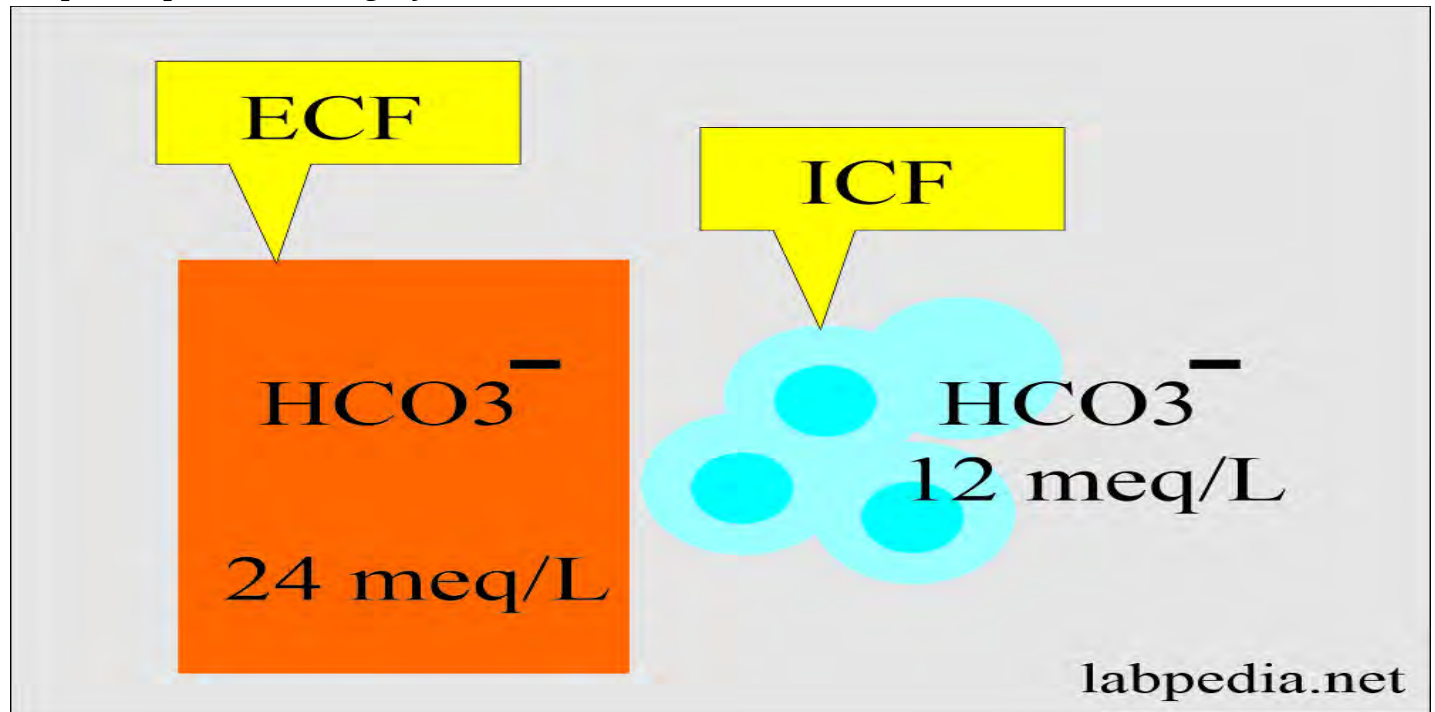
Sample The better choice is the Radial artery. The sample may be...



READ MORE ([HTTPS://LABPEDIA.NET/ACID-BASE-BALANCE-PART-3-RESPIRATORY-ACIDOSIS-AND-](https://labpedia.net/acid-base-balance-part-3-respiratory-acidosis-and-)

## Acid-Base Balance:- Part 4 – Arterial Blood gases (Blood Gases), Acid-Base balance Mechanism (<https://labpedia.net/acid-base-...>

Chemical pathology (<https://labpedia.net/category/lab-tests/chemical-pathology/>) | Lab Tests  
(<https://labpedia.net/category/lab-tests/>)



(<https://labpedia.net/acid-base-balance-part-4-arterial-blood-gases-blood-gases-acid-base-balance-mechanism/>)

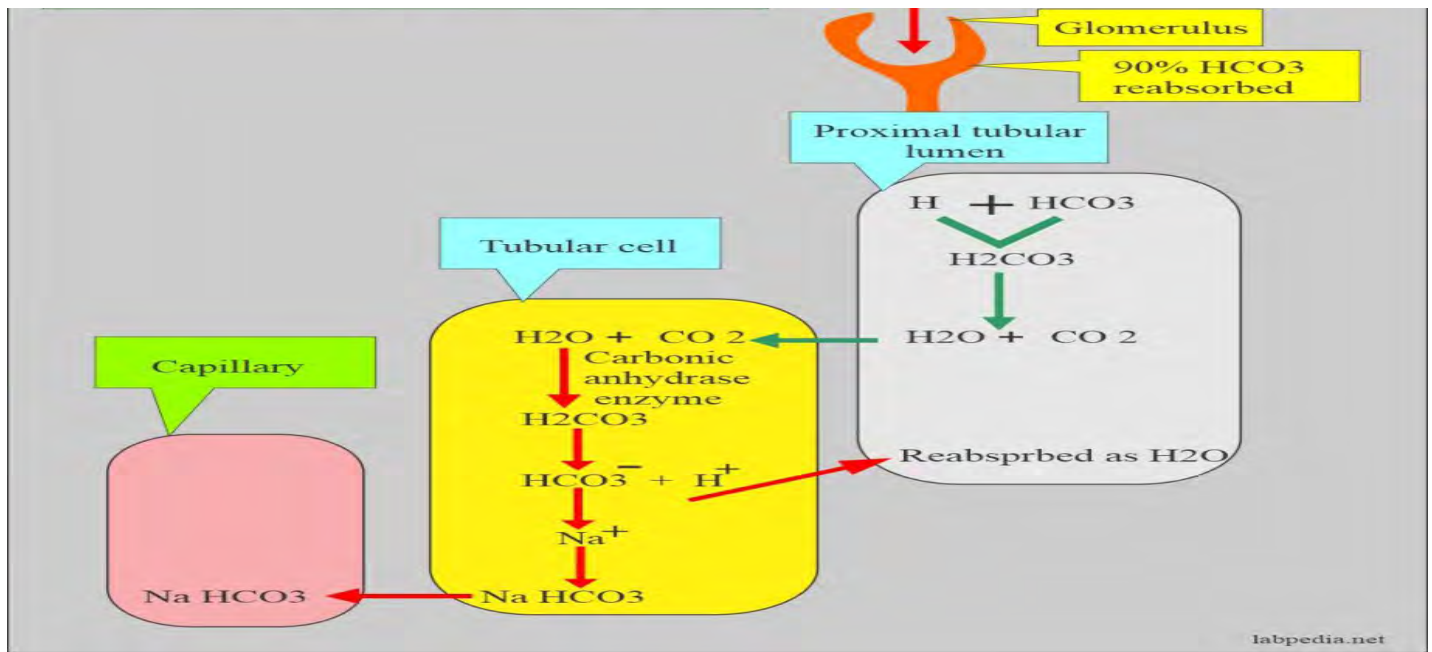
Sample The better choice is the Radial artery. Can draw the blood...

READ MORE ([HTTPS://LABPEDIA.NET/ACID-BASE-BALANCE-PART-4-ARTERIAL-BLOOD-GASES-BLOOD-GASES-ACID-BASE-BALANCE-MECHANISM/](https://labpedia.net/acid-base-balance-part-4-arterial-blood-gases-blood-gases-acid-base-balance-mechanism/))

## Acid-base Balance:- Part 5 – Bicarbonate Level ( $\text{HCO}_3^-$ ) (<https://labpedia.net/acid-base-balance-part-5-bicarbonate-level-...>

Chemical pathology (<https://labpedia.net/category/lab-tests/chemical-pathology/>) | Lab Tests  
(<https://labpedia.net/category/lab-tests/>)





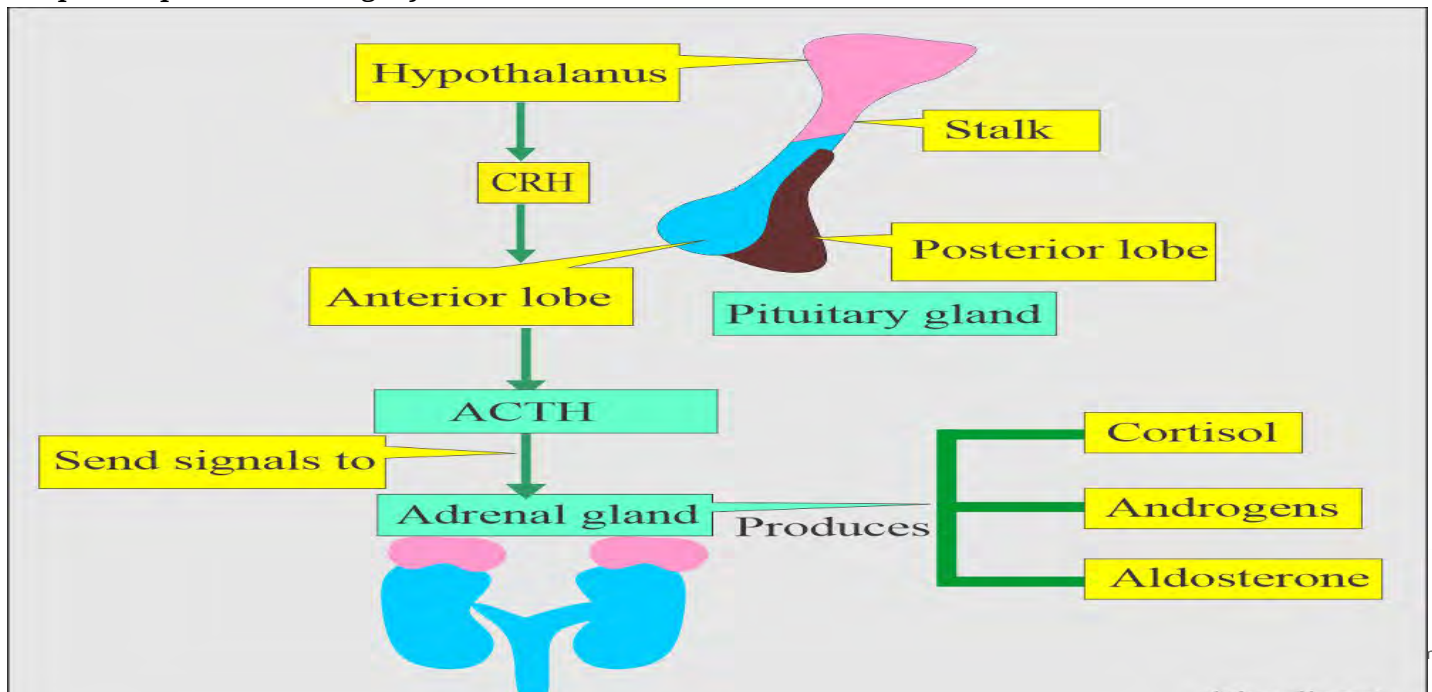
(<https://labpedia.net/acid-base-balance-part-5-bicarbonate-level-hco3/>)

Sample It is done on the patient's serum or plasma (plasma arterial...

READ MORE ([HTTPS://LABPEDIA.NET/ACID-BASE-BALANCE-PART-5-BICARBONATE-LEVEL-HCO3/](https://labpedia.net/acid-base-balance-part-5-bicarbonate-level-hco3/))

## ACTH (Adrenocorticotrophic Hormone), Cushing's Syndrome (<https://labpedia.net/acth-adrenocorticotrophic-hormone-cushing...>)

Chemical pathology (<https://labpedia.net/category/lab-tests/chemical-pathology/>) | Lab Tests (<https://labpedia.net/category/lab-tests/>)



(<https://labpedia.net/acth-adrenocorticotrophic-hormone-cushings-syndrome/>)

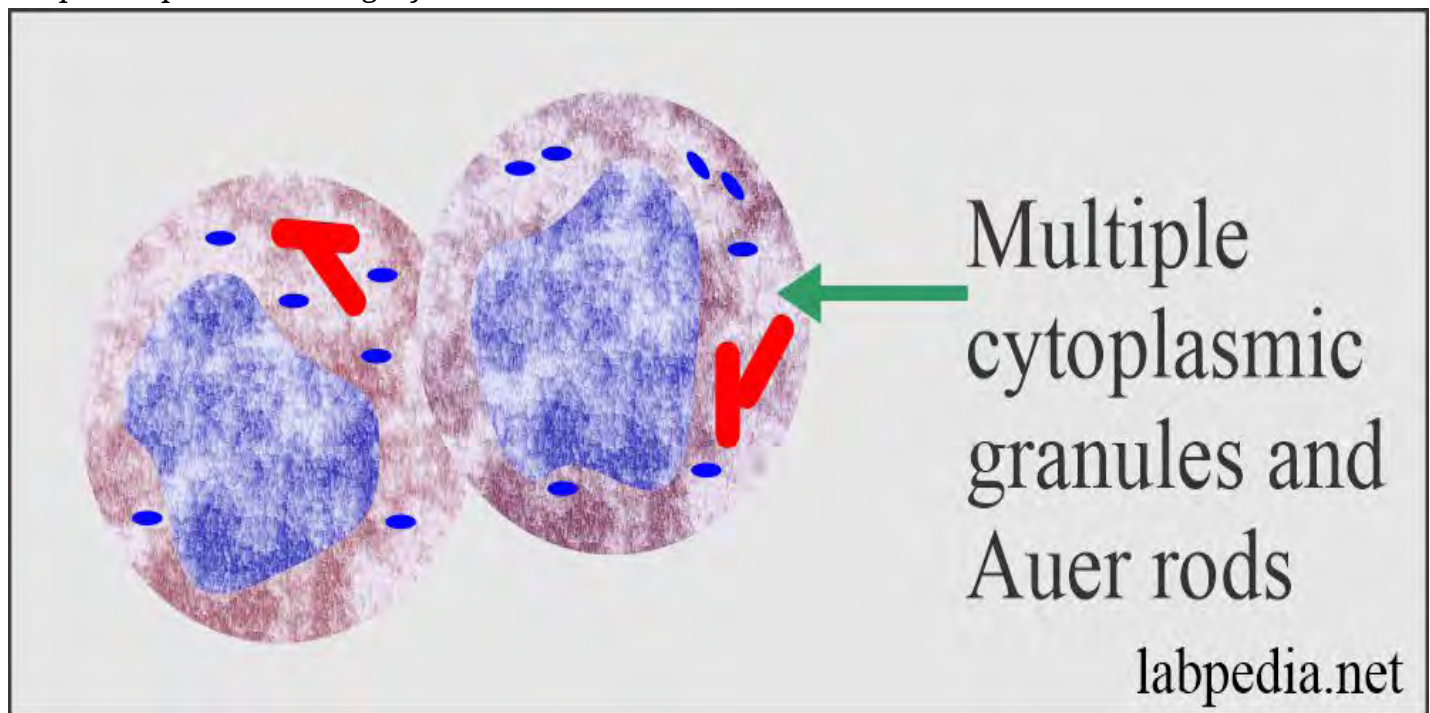
Sample The Patient's plasma is needed. Place blood immediately in ice water and...

READ MORE ([HTTPS://LABPEDIA.NET/ACTH-ADRENOCORTICOTROPIC-HORMONE-CUSHINGS-SYNDROME/](https://labpedia.net/acth-adrenocorticotrophic-hormone-cushings-syndrome/))

## Acute Leukemias and their Diagnosis, Acute Myelocytic and Acute Lymphocytic Leukemia (<https://labpedia.net/acute-leukemias-an...>)

Hematology (<https://labpedia.net/category/lab-tests/hematology/>) | Lab Tests

(<https://labpedia.net/category/lab-tests/>)



(<https://labpedia.net/acute-leukemias-and-their-diagnosis-acute-myelocytic-and-acute-lymphocytic-leukemia/>)

Sample Blood in EDTA and fresh blood smear needed. Bone marrow aspirate...

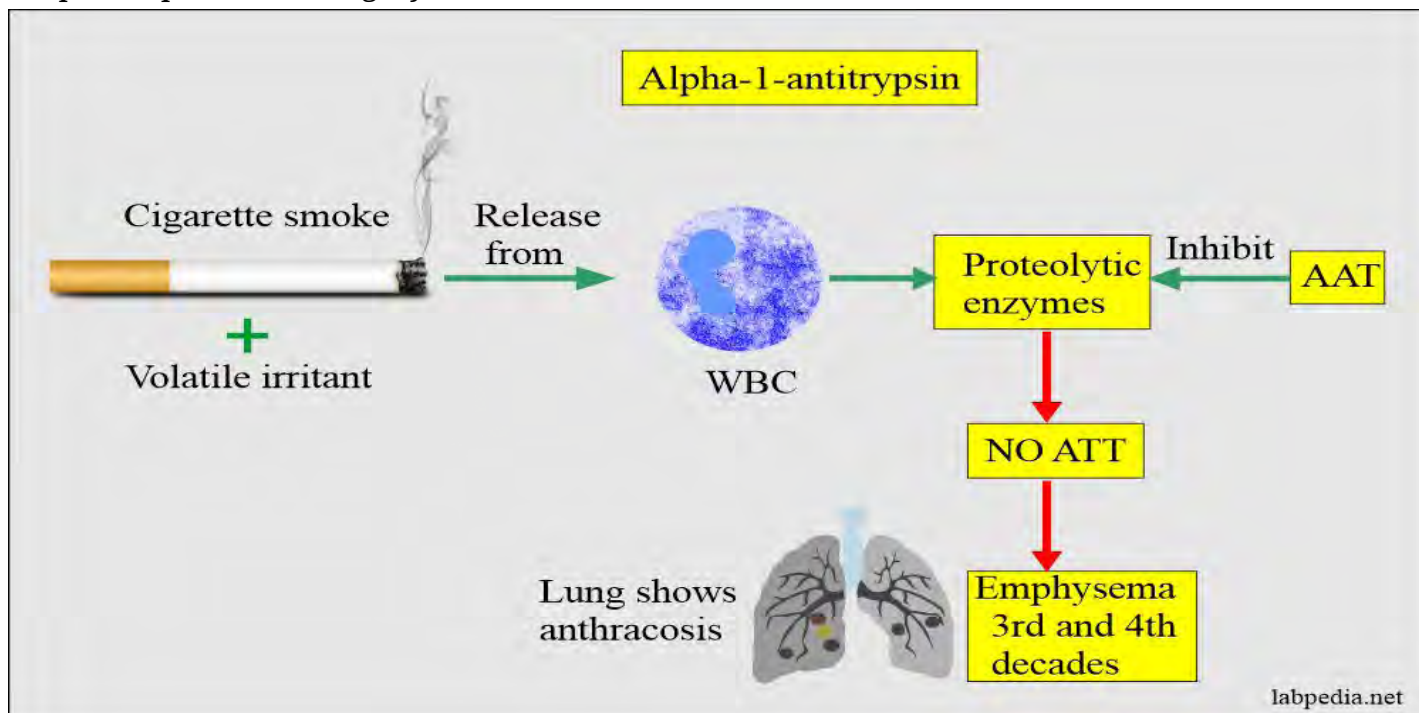
READ MORE ([HTTPS://LABPEDIA.NET/ACUTE-LEUKEMIAS-AND-THEIR-DIAGNOSIS-ACUTE-MYELOCYTIC-AND-ACUTE-LYMPHOCYTIC-LEUKEMIA/](https://labpedia.net/acute-leukemias-and-their-diagnosis-acute-myelocytic-and-acute-lymphocytic-leukemia/))

## Acute Phase Protein:- Alpha-1-Antitrypsin ( $\alpha$ 1-antitrypsin) (<https://labpedia.net/acute-phase-protein-alpha-1-antitrypsin-...>)

Privacy - Terms



Immune system (<https://labpedia.net/category/lab-tests/immune-system/>) | Lab Tests  
 (<https://labpedia.net/category/lab-tests/>)



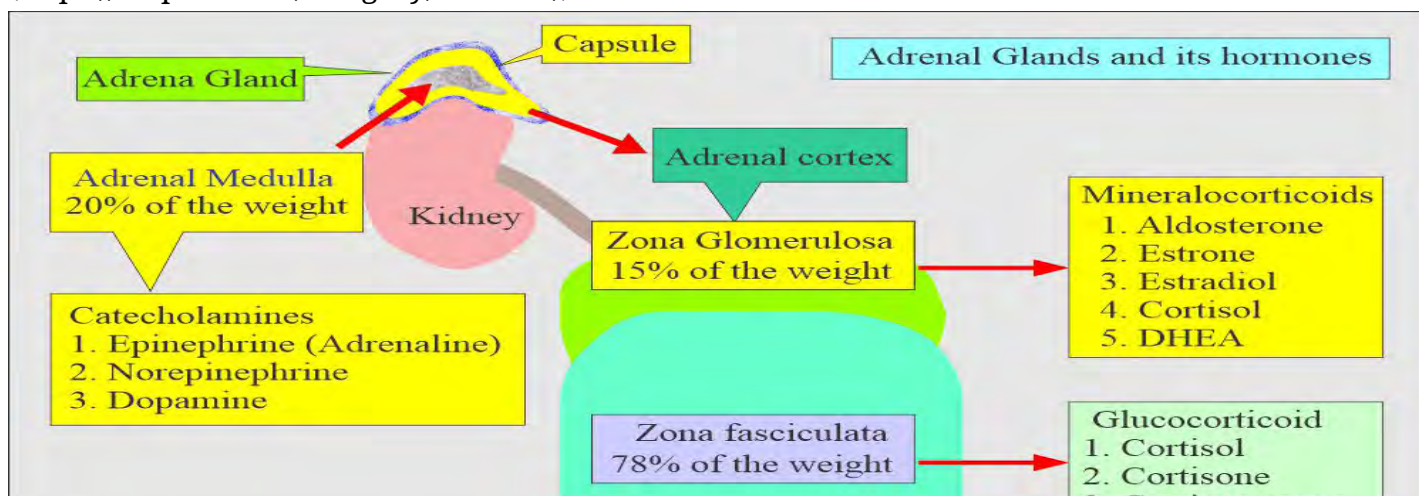
(<https://labpedia.net/acute-phase-protein-alpha-1-antitrypsin-%ce%b11-antitrypsin/>)

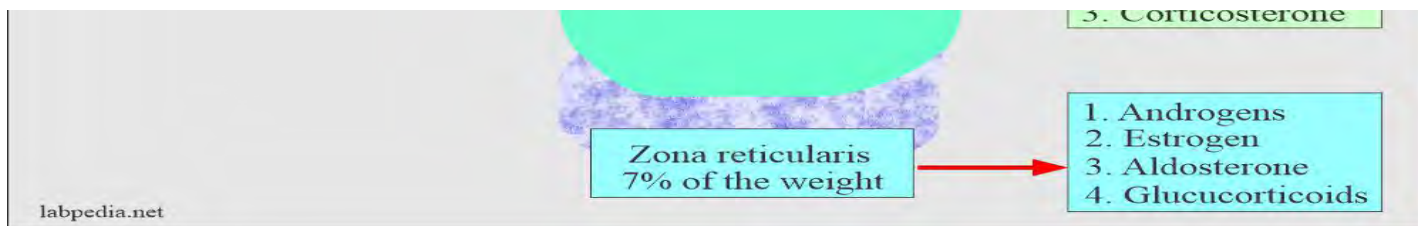
Acute-phase protein (Acute Phase Reactants) Acute-phase protein is raised in inflammatory...

READ MORE ([HTTPS://LABPEDIA.NET/ACUTE-PHASE-PROTEIN-ALPHA-1-ANTITRYPSIN-%CE%B11-ANTITRYPSIN/](https://labpedia.net/acute-phase-protein-alpha-1-antitrypsin-%ce%b11-antitrypsin/))

## Adrenal Gland Hormones Interpretation, (Cortisol and Aldosterone), Blood sample and Precautions...

Chemical pathology (<https://labpedia.net/category/lab-tests/chemical-pathology/>) | Lab Tests  
 (<https://labpedia.net/category/lab-tests/>)





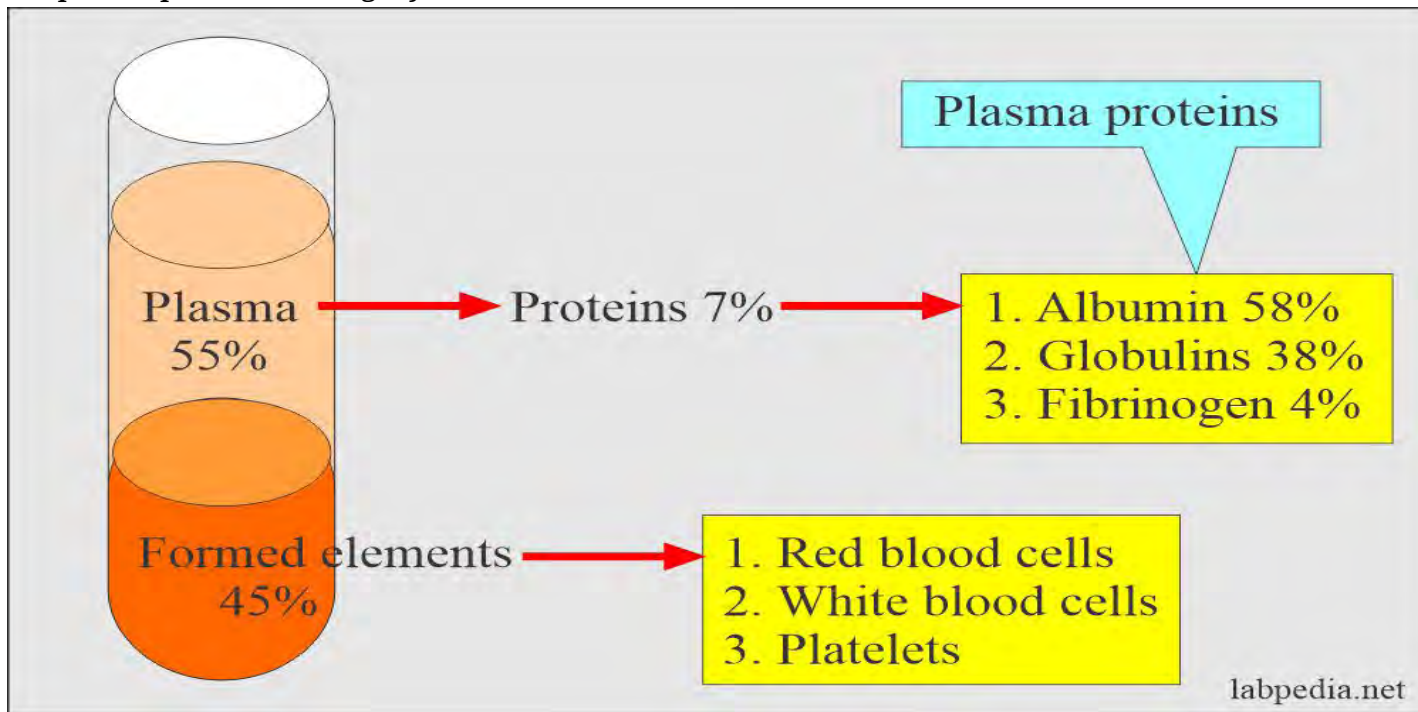
(<https://labpedia.net/adrenal-gland-hormones-interpretation-cortisol-aldosterone-blood-sample-and-precautions/>)

Sample The serum of the patient is required. The urine sample may...

READ MORE ([HTTPS://LABPEDIA.NET/ADRENAL-GLAND-HORMONES-INTERPRETATION-CORTISOL-ALDOSTERONE-BLOOD-SAMPLE-AND-PRECAUTIONS/](https://labpedia.net/adrenal-gland-hormones-interpretation-cortisol-aldosterone-blood-sample-and-precautions/))

## Albumin (Serum Albumin) (<https://labpedia.net/albumin-serum-albumin/>)

Chemical pathology (<https://labpedia.net/category/lab-tests/chemical-pathology/>) | Lab Tests  
 (<https://labpedia.net/category/lab-tests/>)



(<https://labpedia.net/albumin-serum-albumin/>)

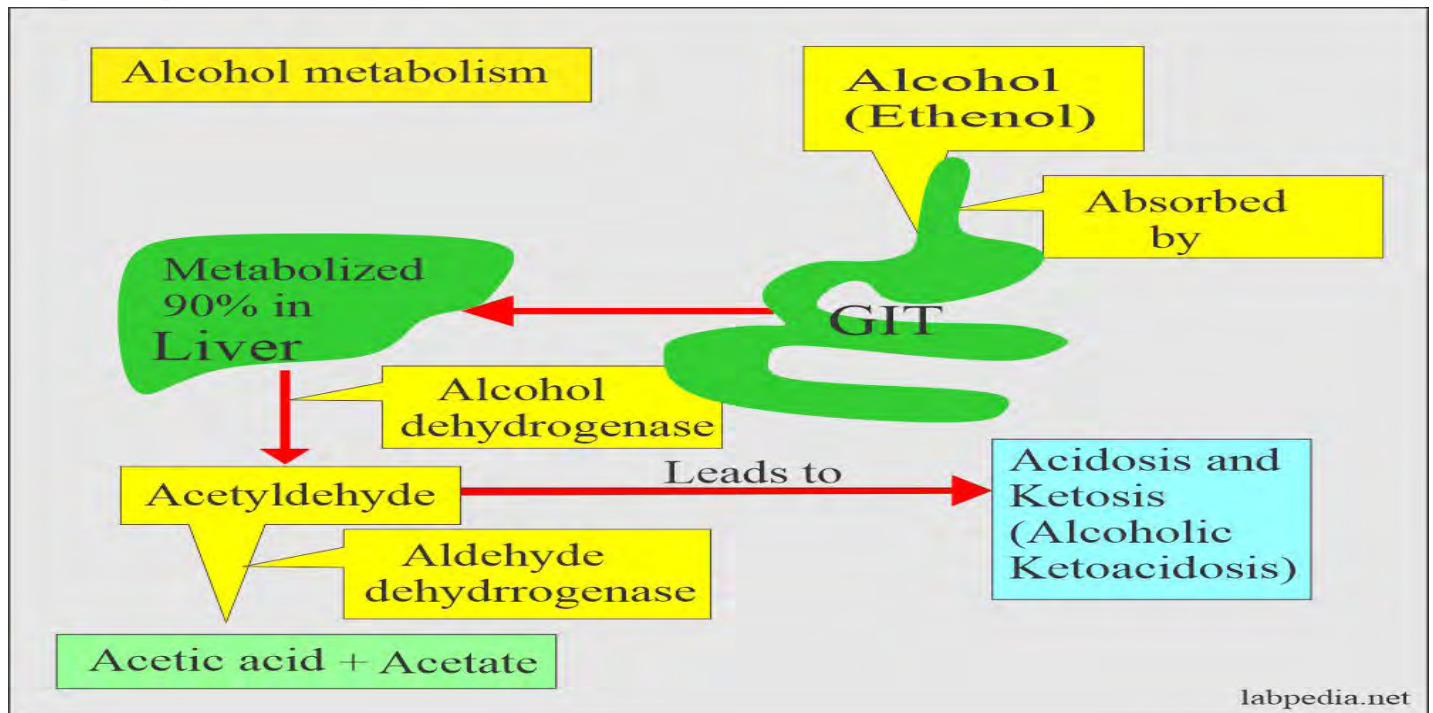
Sample It is done on the serum of the patient. How to...

READ MORE ([HTTPS://LABPEDIA.NET/ALBUMIN-SERUM-ALBUMIN/](https://labpedia.net/albumin-serum-albumin/))



# Alcohols: Ethyl alcohol (Ethanol), Methanol, Isopropanol, and Ethylene Glycol, and Complications (<https://labpedia.net/ethyl-...>)

Chemical pathology (<https://labpedia.net/category/lab-tests/chemical-pathology/>) | Lab Tests  
(<https://labpedia.net/category/lab-tests/>)



(<https://labpedia.net/ethyl-alcohol-ethanol-methanol-isopropanol-ethylene-glycol-and-complications/>)

Sample Alcohol levels can be estimated in blood, breath, and saliva. When...

**READ MORE ([HTTPS://LABPEDIA.NET/ETHYL-ALCOHOL-ETHANOL-METHANOL-ISOPROPANOL-ETHYLENE-GLYCOL-AND-COMPLICATIONS/](https://labpedia.net/ethyl-alcohol-ethanol-methanol-isopropanol-ethylene-glycol-and-complications/))**

1 (<https://labpedia.net/category/lab-tests/>)

2 (<https://labpedia.net/category/lab-tests/page/2/>)

3 (<https://labpedia.net/category/lab-tests/page/3/>)

4 (<https://labpedia.net/category/lab-tests/page/4/>)

5 (<https://labpedia.net/category/lab-tests/page/5/>)

6 (<https://labpedia.net/category/lab-tests/page/6/>)

7 ( <a href="https://labpedia.net/category/lab-tests/page/7/">https://labpedia.net/category/lab-tests/page/7/</a> )
8 ( <a href="https://labpedia.net/category/lab-tests/page/8/">https://labpedia.net/category/lab-tests/page/8/</a> )
9 ( <a href="https://labpedia.net/category/lab-tests/page/9/">https://labpedia.net/category/lab-tests/page/9/</a> )
10 ( <a href="https://labpedia.net/category/lab-tests/page/10/">https://labpedia.net/category/lab-tests/page/10/</a> )
11 ( <a href="https://labpedia.net/category/lab-tests/page/11/">https://labpedia.net/category/lab-tests/page/11/</a> )
12 ( <a href="https://labpedia.net/category/lab-tests/page/12/">https://labpedia.net/category/lab-tests/page/12/</a> )
13 ( <a href="https://labpedia.net/category/lab-tests/page/13/">https://labpedia.net/category/lab-tests/page/13/</a> )
14 ( <a href="https://labpedia.net/category/lab-tests/page/14/">https://labpedia.net/category/lab-tests/page/14/</a> )
15 ( <a href="https://labpedia.net/category/lab-tests/page/15/">https://labpedia.net/category/lab-tests/page/15/</a> )
16 ( <a href="https://labpedia.net/category/lab-tests/page/16/">https://labpedia.net/category/lab-tests/page/16/</a> )
17 ( <a href="https://labpedia.net/category/lab-tests/page/17/">https://labpedia.net/category/lab-tests/page/17/</a> )
18 ( <a href="https://labpedia.net/category/lab-tests/page/18/">https://labpedia.net/category/lab-tests/page/18/</a> )
19 ( <a href="https://labpedia.net/category/lab-tests/page/19/">https://labpedia.net/category/lab-tests/page/19/</a> )
20 ( <a href="https://labpedia.net/category/lab-tests/page/20/">https://labpedia.net/category/lab-tests/page/20/</a> )
21 ( <a href="https://labpedia.net/category/lab-tests/page/21/">https://labpedia.net/category/lab-tests/page/21/</a> )
22 ( <a href="https://labpedia.net/category/lab-tests/page/22/">https://labpedia.net/category/lab-tests/page/22/</a> )
23 ( <a href="https://labpedia.net/category/lab-tests/page/23/">https://labpedia.net/category/lab-tests/page/23/</a> )
24 ( <a href="https://labpedia.net/category/lab-tests/page/24/">https://labpedia.net/category/lab-tests/page/24/</a> )
25 ( <a href="https://labpedia.net/category/lab-tests/page/25/">https://labpedia.net/category/lab-tests/page/25/</a> )
26 ( <a href="https://labpedia.net/category/lab-tests/page/26/">https://labpedia.net/category/lab-tests/page/26/</a> )
27 ( <a href="https://labpedia.net/category/lab-tests/page/27/">https://labpedia.net/category/lab-tests/page/27/</a> )
28 ( <a href="https://labpedia.net/category/lab-tests/page/28/">https://labpedia.net/category/lab-tests/page/28/</a> )
29 ( <a href="https://labpedia.net/category/lab-tests/page/29/">https://labpedia.net/category/lab-tests/page/29/</a> )
30 ( <a href="https://labpedia.net/category/lab-tests/page/30/">https://labpedia.net/category/lab-tests/page/30/</a> )

<a href="https://labpedia.net/category/lab-tests/page/31/">31 (https://labpedia.net/category/lab-tests/page/31/)</a>
<a href="https://labpedia.net/category/lab-tests/page/32/">32 (https://labpedia.net/category/lab-tests/page/32/)</a>
<a href="https://labpedia.net/category/lab-tests/page/33/">33 (https://labpedia.net/category/lab-tests/page/33/)</a>
<a href="https://labpedia.net/category/lab-tests/page/34/">34 (https://labpedia.net/category/lab-tests/page/34/)</a>
<a href="https://labpedia.net/category/lab-tests/page/35/">35 (https://labpedia.net/category/lab-tests/page/35/)</a>
<a href="https://labpedia.net/category/lab-tests/page/2/">Next (https://labpedia.net/category/lab-tests/page/2/)</a>

## ABOUT US

---

Labpedia.net is non-profit health information resource. All informations are useful for doctors, lab technicians, nurses, and paramedical staff. All the tests include details about the sampling, normal values, precautions, pathophysiology, and interpretation.

✉ (<mailto:info@labpedia.net>) [info@labpedia.net](mailto:info@labpedia.net) (<mailto:info@labpedia.net>)

[f \(https://www.facebook.com/Labpedianet/\)](https://www.facebook.com/Labpedianet/) [🐦 \(https://twitter.com/labpedia\)](https://twitter.com/labpedia) [📺 \(https://www.youtube.com/channel/UCG8-QT\\_YKhQU7jNtZ6iNjyw\)](https://www.youtube.com/channel/UCG8-QT_YKhQU7jNtZ6iNjyw)

## QUICK LINKS

---

[Blog \(https://labpedia.net/category/blog/\)](https://labpedia.net/category/blog/)

[About Us \(https://labpedia.net/about-us/\)](https://labpedia.net/about-us/)

[Contact \(https://labpedia.net/contact/\)](https://labpedia.net/contact/)

[Disclaimer \(https://labpedia.net/disclaimer/\)](https://labpedia.net/disclaimer/)

## OUR TEAM

---

[Professor Dr. Riaz Ahmad Bhutta \(https://www.labpedia.net/dr-riaz/\)](https://www.labpedia.net/dr-riaz/)

[Dr. Naheed Afroz Syed \(https://www.labpedia.net/dr-naheed-afroz-syed/\)](https://www.labpedia.net/dr-naheed-afroz-syed/)



Dr. Asad Ahmad, M.D. (<https://www.labpedia.net/dr-asad-ahmad/>)

Dr. Shehpar Khan, M.D. (<https://www.labpedia.net/dr-shahpar-khan/>)

Copyright © 2014 - 2022. All Rights Reserved.

Web development by Farhan Ahmad (<https://thebitguru.com/>).