



Preoperative Neutrophil to Lymphocyte Ratio Predicts Complications After Esophageal Resection That can be Used as Inclusion Criteria for Enhanced Recovery After Surgery

OPEN ACCESS

Edited by:

Dietmar Ötner,
Medical University of Innsbruck,
Austria

Reviewed by:

Yushi Ueki,
Niigata University, Japan
Leonidas Papastavrou,
Athens Medical Center, Greece

*Correspondence:

Hezhong Chen
drchenhz@126.com
Chun-Guang Li
dr_lichunguang@163.com

[†]These authors have contributed
equally to this work

Specialty section:

This article was submitted to Thoracic
Surgery, a section of the journal
Frontiers in Surgery

Received: 16 March 2022

Accepted: 22 June 2022

Published: 13 July 2022

Citation:

Shi B-W, Xu L, Gong C-X, Yang F,
Han Y-D, Chen H-Z and Li C-G (2022)
Preoperative Neutrophil to
Lymphocyte Ratio Predicts
Complications After Esophageal
Resection That can be Used as
Inclusion Criteria for Enhanced
Recovery After Surgery. *Front. Surg.*
9:897716.
doi: 10.3389/fsurg.2022.897716

Bo-Wen Shi^{††}, Li Xu^{††}, Chun-Xia Gong^{††}, Fu Yang³, Yu-Dong Han⁴, He-Zhong Chen^{1*}
and Chun-Guang Li^{†,5*}

¹Department of Thoracic Surgery, Changhai Hospital, Navy Military Medical University, Shanghai, China, ²Department of Thoracic Surgery, Shanghai Pulmonary Hospital, Tongji University School of Medicine, Shanghai, China, ³Department of Thoracic Surgery, Shanghai First People's Hospital, Shanghai Jiao Tong University School of Medicine, Shanghai, China, ⁴Department of Thoracic Surgery, Affiliated Hospital of Qingdao University, Qingdao, China, ⁵Department of Thoracic Surgery, Shanghai Chest Hospital, Shanghai Jiao Tong University, Shanghai, China

Background: The neutrophil to lymphocyte ratio (NLR) has been reported as an indicator for poor prognosis in many cancers including esophageal cancer. However, the relationship between the NLR and postoperative complications after esophageal cancer resection remains unclear. At present, enhanced recovery after surgery (ERAS) lacks inclusion criteria. The aim of this study is to determine whether the preoperative NLR (_{pre}NLR) can predict complications after esophageal cancer resection, which could represent the criteria for ERAS.

Methods: This was a retrospective study on 171 patients who underwent esophagectomy at Hospital between November 2020 and November 2021 (68 patients from Changhai Hospital, 65 patients from Shanghai General Hospital and 38 patients from Affiliated Hospital of Qingdao University). Univariate and multivariate logistic regression analyses were performed to demonstrate that the _{pre}NLR could predict complications after esophagectomy.

Results: A _{pre}NLR cutoff value of 2.30 was identified as having the greatest ability to predict complications with a sensitivity of 76% and specificity of 65%. Moreover, the Chi-squared test results showed that the _{pre}NLR was significantly associated with complications ($\chi^2 = 13.641$, $p < 0.001$), and multivariate logistic regression analysis showed that body mass index (BMI), p stage and _{pre}NLR were independent variables

Abbreviations: ESCC, Esophageal squamous cell carcinoma; NLR, neutrophil to lymphocyte ratio; ERAS, enhanced recovery after surgery; _{pre}NLR, preoperative neutrophil to lymphocyte ratio; BMI, body mass index; EMR, endoscopic mucosal resection; ESD, endoscopic submucosal dissection; AJCC, American Joint Committee on Cancer; ASA, American Society of Anesthesiologists; GPS, Glasgow Prognostic Score; VEGF, vascular endothelial growth factor.

associated with the development of postoperative complications ($p < 0.05$).

Conclusion: The $_{pre}$ NLR can predict complications after esophagectomy, and these predicted complications can represent the criteria for recruiting patients for ERAS.

Keywords: preoperative, neutrophil to lymphocyte ratio, esophageal resection, complications, enhanced recovery after surgery

INTRODUCTION

Esophageal cancer is the 6th leading cause of death from cancer and the 8th most common cancer in the world associated with high rates of morbidity and mortality; the 5-year survival is approximately 15%–25%, and the best prognoses are related to early diagnosis (1). Early detection and intervention can reduce adverse effects and improve the survival of patients. Although advancements in endoscopic techniques, such as endoscopic mucosal resection (EMR) or endoscopic submucosal dissection (ESD), have greatly benefited patients with early-stage disease, surgical resection remains the most important treatment measure. Esophagectomy is a complex procedure associated with complications such as pneumonia and anastomotic leakage that can restrict oral feeding, leading to short postoperative survival rates (2). With improvements in surgery and perioperative care resulting in reduced mortality after esophageal cancer (3), there is an urgent need to identify patients who are eligible for enhanced recovery after esophageal carcinoma resection. Enhanced recovery after surgery (ERAS) is based on a suite of clinical processes and evidence that it is on the premise of not increasing complications, it can improve comfort, shorten hospitalization time and reduce treatment costs. following a major surgery; it was initially established for colorectal surgery (4–6). Currently, ERAS has gained attention with regard to esophagectomy, and an increasing number of retrospective and prospective studies and clinical protocols are being reported. Accelerated recovery with ERAS is associated with not only reduction in the duration of hospital stay, pulmonary complications and anastomotic leakage but also decreased pain after surgery and faster return to normal life, especially oral feeding. However, to our disappointment, despite enhancement in the interventions during anesthesia and postoperative rehabilitation exercise, there is no consensus on when patients should return to oral feeding, as many patients suffer from anastomotic leakage during ERAS (7–11). Except for severe malnutrition and adverse reactions after neoadjuvant chemotherapy being considered in the exclusion criteria, there are no official guidelines to select the patients undergoing esophagectomy who are eligible for ERAS.

Systemic inflammatory responses have been demonstrated to be associated with cancer initiation and progression and poor outcomes in various malignant tumors (12–16). Inflammatory indicators such as the neutrophil to lymphocyte ratio (NLR) is suggested to include critical information that makes the NLR suitable as a serum biomarker that can reflect early complications associated with recovery, so that we may implement appropriate treatment strategies to address adverse

outcomes in a wide range of patients (17–20). However, the relationship between preoperative or postoperative NLR and complications after esophagectomy is still uncertain. In this study, we aimed to determine the association between the NLR and postoperative complications to determine the potential of the NLR as an indicator for patients who are eligible for ERAS.

MATERIALS AND METHODS

Patients and Perioperative Management

The work has been reported in line with the PROCESS criteria (21). This was a retrospective study, and a total of 668 patients who underwent video-assisted laparo-thoracoscopy *via* cervical anastomosis esophagectomy at three hospitals between November 2019 and November 2020 were recruited. The patients' eligibility for surgery was evaluated by a multidisciplinary team meeting following appropriate disease staging; meanwhile, physical fitness for surgery was evaluated by the operating surgeon and anesthetist. The exclusion criteria of this study were as follows: patients who underwent surgical procedures except video-assisted laparo-thoracoscopy *via* cervical anastomosis; patients who had advanced cardiopulmonary dysfunction; patients who used hemopoietin internally for two weeks; patients who had donated blood or underwent blood transfusion in the prior two weeks; patients who recently used glucocorticoids or human granulocyte colony stimulating factor; patients with unknown elevated or reduced white blood cell count and neutrophil or lymphocyte count; patients with hematological disease or autoimmune disease; patients with previous or concomitant cancer; patients who exhibited clinical evidence of infection or other inflammatory conditions; patients who used anti-inflammatory medicines within 1 week of surgery; patients with penicillin or cephalosporin allergy and who used other antibiotics during the operation; and patients suffering from bleeding, chylothorax, recurrent laryngeal nerve paralysis (RLNP) or pneumothorax. Ultimately, 171 patients were included in the study. All patients were subjected to white blood cell counting and neutrophil, lymphocyte, and albumin quantification within one week before surgery (the preoperative neutrophil to lymphocyte ratio was designated $_{pre}$ NLR). Samples were obtained on the day of surgery ($_{D0}$ NLR) and on the first day after surgery ($_{D1}$ NLR), and the data were included in the analysis (laboratory inspection was performed by the Experimental Diagnostic Department; reference ranges at our institution were $4.0\text{--}10.0 \times 10^9/\text{L}$ for white blood cell counts, $2.0\text{--}7.0 \times 10^9/\text{L}$ for neutrophil count, and $0.8\text{--}4.0 \times 10^9/\text{L}$ for

lymphocyte count. The NLR was calculated by dividing the number of neutrophils by the number of lymphocytes).

The patients' clinical pathological parameters were collected from being admitted to hospital to being discharged. All patients had been given the same antibiotics at the induction of anesthesia to prevent infection and cure potential infections, enteral nutrition or total parenteral nutrition, proton pump inhibitor, and none of them were administered intravenous infusion of albumin during the study. The patients were routinely admitted to the intensive care unit after surgery. Warm water nasal feeding was performed the day after surgery; when patients felt uncomfortable, enteral nutrition was administered as early as possible to maintain normal physiology. X-ray of the chest and clinical characteristics (temperature, blood routine, drainage of chest tube) were used to evaluate eligibility to resume oral feeding. Informed consent was obtained from each patient, and the study procedures were approved by the Institutional Review Board.

Pathological Analysis and Definitions

The data were obtained from hospital records and retrospectively analyzed. All recruited patients underwent pathological diagnosis via gastroscopy and biopsy before surgery. The American Society of Anesthesiologists (ASA) grade was assessed by the anesthetist in charge, and tumor size, invasion, operation time, intraoperative blood loss and other data were assessed by the surgeon in charge and the first assistant and recorded in the operation notes. Then, the specimens were sent for pathological examination after preservation in 10% formalin. Tumor staging was based on the American Joint Committee on Cancer (AJCC) Staging Manual (7th edition; Springer, New York) (22), combined with computed tomography scanning of the chest and abdomen. Complications were mainly defined according to mortality and morbidity, including pulmonary infection ((respiratory symptoms and infiltration on chest radiography associated with fever requiring antibiotic treatment), superficial or deep tissue infection, sepsis (23), anastomotic leakage and gastric fistula (based on video-assisted fluoroscopy or computerized tomography after oral contrast agent administration), anastomotic stricture, small bowel obstruction, postoperative, hemorrhage, arrhythmia, pneumothorax, and deep vein thrombosis). These complications were confirmed and recorded accurately by the doctor in charge.

Statistical Analysis

We determined the optimal discriminator value for the NLR using receiver operating characteristic (ROC) curve analysis. An area under the curve (AUC) > 0.7 was considered clinically relevant. Chi-squared tests were used to compare proportions. Nonparametric variables were analyzed by the Mann-Whitney U-test. Multivariate logistic regression analyses were used to examine the effect of variables on the development of postoperative complications. *p* values were reported to three decimal places, and a two-tailed *p* value of <0.05 was taken as significant.

Statistical analysis was conducted with SPSS 22.0 (IBM Corporation, Armonk, NY, USA).

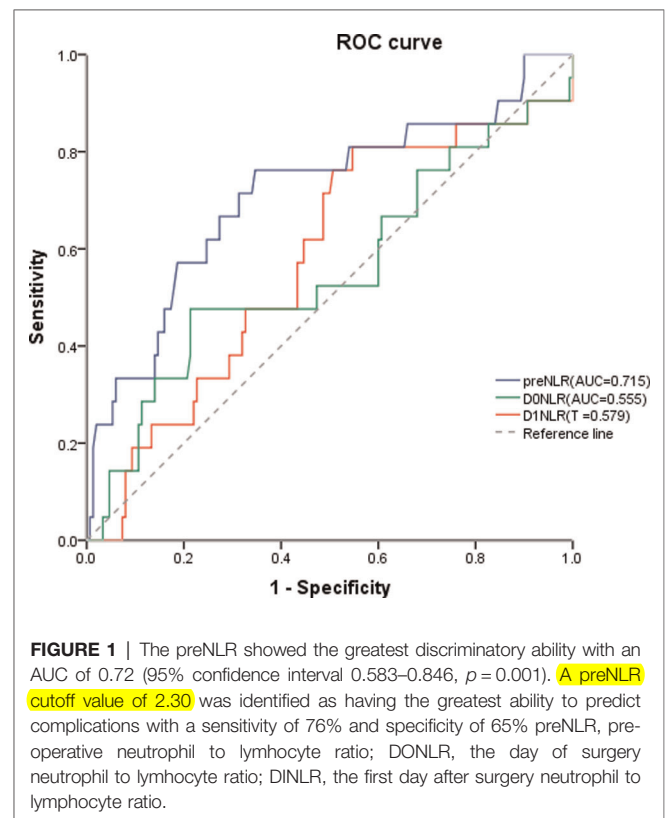
RESULTS

Clinicopathological Features

A total of 171 patients (122 men and 49 women) met the inclusion criteria and were recruited for analysis; their age ranged from 45 to 76 years, with an average of 62.43 ± 6.60 years. The average body mass index (BMI) was $23.49 \pm 2.86 \text{ kg/m}^2$; the average operation time was $289.27 \pm 56.22 \text{ min}$; the average blood loss was $225.50 \pm 114.52 \text{ ml}$; and the average postoperative hospital stay duration was $11.11 \pm 6.18 \text{ days}$. Twenty-one patients had complications, including respiratory infection in 5 (23.8%), anastomotic fistula in 7 (33.3%), catheter infection in 3 (1.8%), wound infection in 1 (4.8%), and other complications in 5 (36.3%) patients. None of the patients died during the operation. Meanwhile, 3 patients underwent re-intubation for pulmonary infection and respiratory failure.

Relationship Between the NLR and Complications

The preNLR showed the greatest discriminatory ability with an AUC of 0.72 (95% confidence interval 0.583–0.846, $p = 0.001$). A preNLR cutoff value of 2.30 was identified as having the greatest ability to predict complications (Figure 1) with a sensitivity of 76% and specificity of 65%. The average preNLR was 2.45 ± 1.36 .



Relationship Between Clinicopathological and Complications

The Chi-squared test and Mann–Whitney U-test results showed that BMI ($\chi^2 = 8.794$, $p = 0.003$), ASA grade ($\chi^2 = 7.735$, $p = 0.021$), operation time ($\chi^2 = 4.485$, $p = 0.034$), intraoperative blood loss ($\chi^2 = 3.909$, $p = 0.048$), tumor size ($\chi^2 = 3.909$, $p = 0.048$), T stage ($\chi^2 = 10.552$, $p = 0.014$), N stage ($\chi^2 = 12.028$, $p = 0.007$), p stage ($\chi^2 = 28.117$, $p < 0.001$), postoperative hospital stay ($z = -7.257$, $p < 0.001$) and $preNLR$ ($\chi^2 = 13.641$, $p < 0.001$) were significantly associated with complications. There were no significant difference regarding age, sex, neoadjuvant chemotherapy, forced expiratory volume 1 (FEV1), albumin, or histological differentiation ($p > 0.05$) (Table 1).

TABLE 1 | Relationship between preoperative neutrophil to lymphocyte ratio and clinicopathological characteristics in patients undergoing esophagectomy for esophageal cancer (n = 171).

	Uncomplicated	Complicated	Test Value	p-value
Gender				
Male	111	18	fisher	0.292
Female	39	3		
Age				
≤65	103	13	0.386	0.534
>65	47	8		
BMI				
≤24	106	8	8.794	0.003
>24	44	13		
ASA				
I	15	1	7.735	0.021
II	114	12		
III	21	8		
Neoadjuvant chemotherapy				
0	143	21	fisher	0.599
1	7	0		
FEV ₁			2.166	0.151
FEV ₁ /predicted FEV ₁			-1.509	0.131
Albumin			-0.165	0.869
Operation time				
≤240	106	10	4.485	0.034
>240	44	11		
Intraoperation blood loss				
≤250	110	11	3.909	0.048
>250	40	10		
Tumor size				
≤3	104	10	3.909	0.048
>3	46	11		
Tumor location				

(continued)

TABLE 1 | Continued

	Uncomplicated	Complicated	Test Value	p-value
Up	23	0	3.866	0.145
Middle	92	16		
Low	35	5		
T				
1	67	4	10.552	0.014
2	36	4		
3	43	12		
4	1	1		
N				
0	104	9	12.028	0.007
1	33	5		
2	10	6		
3	3	1		
P-Stage				
I + II	122	6	28.117	0
III + IV	27	15		
Histological differentiation				
High	20	1	1.259	0.533
Moderately	111	17		
Poorly	19	3		
Hospital stay			-7.257	0
NLR				
≤2.3	110	7	13.641	0
>2.3	40	14		

TABLE 2 | Clinicopathologic characteristics in patients undergoing Esophagectomy: Multivariate Logistic Regression Analysis.

Clinicopathologic characteristics	B	S.E.	Wald	OR	95% CI	p-value
BMI	1.515	0.582	6.789	4.551	1.456–14.228	$p < 0.05$
p-Stage	2.491	0.585	18.104	12.075	3.83–38.043	$p < 0.05$
preNLR	1.527	0.572	7.131	4.605	1.501–14.126	$p < 0.05$

Multivariate Logistic Regression Analysis of Clinicopathologic Characteristics in Patients with Complications

The results of univariate analysis for factors associated with postoperative complications after esophagectomy are shown in Table 2. We next analyzed the clinicopathologic characteristics for which Chi-squared test and Mann–Whitney U-test results showed $p < 0.15$. In addition to BMI, ASA grade, operation time, intraoperative blood loss, tumor size, T, N, and p stage, postoperative hospital stay and $preNLR$, we included FEV1/predicted FEV1 ($z = -1.509$, $p = 0.131$) and tumor location ($z = 3.866$, $p = 0.145$) in our analyses. Indeed, BMI, p stage and $preNLR$ were independent variables associated with the development of postoperative complications ($p < 0.05$).

DISCUSSION

To the best of our knowledge, this is the first study demonstrating that the NLR (in addition to surgical factors) is a potential indicator of complications in patients after esophageal cancer resection.

In the past years, several studies have demonstrated that the Glasgow Prognostic Score (GPS) (the combination of an elevated C-reactive protein (CRP) level and hypoalbuminemia) is associated with poor survival in various cancers (24), but as the primary limitation, CRP level is not a normal examined factor in many institutions. Until now, the systemic inflammatory prognostic marker, the NLR, has received great interest because it is convenient, inexpensive and easy to evaluate by clinical doctors (25). Neutrophils infiltrate in tumor tissues that produce high levels of vascular endothelial growth factor (VEGF). Neutrophils can also produce carcinogenic element to stimulate tumor cells to secrete VEGF. High levels of VEGF can provide a suitable environment for tumor growth and proliferation and promote the formation of tumor blood vessels, thus accelerating tumor growth (26); additionally, a decrease in lymphocytes in the tumor stroma can contribute to tumor cell growth and migration and is associated with poor prognosis (27). The NLR is proven to be an effective predictive factor of prognosis in many malignant tumors (28–30). An increasing number of studies have demonstrated that inflammation plays a critical roles in malignant tumor progression and prognosis; in other words, the regulation of inflammation may benefit patients by preventing the formation of tumors and improving outcomes (31, 32). A study demonstrated that pneumonia has a negative impact on overall survival after esophagectomy, and strategies to prevent pneumonia after esophagectomy can improve outcomes after this operation (33). Several studies demonstrate that inflammation is associated with the prognosis of esophageal cancer. A study from Japan on gastric carcinoma demonstrated that the $_{pre}NLR$ can independently predict the development of postoperative infection-associated complications and reduced survival after gastrectomy. An elevated NLR could trigger postoperative infection and increase the risk of recurrence in patients with these postoperative complications after gastrectomy (34). An study from UK on sixty-five patients showed that an elevated NLR as early as 48 h following surgery was a highly sensitive and significant predictor of postoperative complications (35). One meta-analysis from China comprising nine studies containing 2,513 patients concluded that a high NLR might represent poor prognosis and unfavorable clinicopathologic characteristics for patients with esophageal squamous cell carcinoma (ESCC) (36). These results suggest that the $_{pre}NLR$ might be a precise indicator of the balance between the tumor inflammatory response and host immune response.

In this study, we first analyzed the relationship between the NLR and main complications after esophagectomy. We investigated factors that had never been studied in this context before. To eliminate the confounding effect of the operation technique, we excluded patients with complications such as postoperative bleeding, recurrent laryngeal nerve injury and

pneumothorax. To eliminate the effect of injury from different surgical procedures, we excluded a large number of patients who underwent Ivor-Lewis esophagectomy, nonendoscopic esophageal cancer resection and some other surgical procedures. Additionally, we excluded patients who had taken glucocorticoids, erythropoietin, or human granulocyte colony stimulating factor, patients who recently underwent blood donation or transfusion or patients with hematological diseases or autoimmune diseases to prevent the effect or routine changes in blood. Our study demonstrated the NLR along with BMI and p stage is an independent risk factor for complications. BMI has been proven to be a risk factor of complications and prognosis after resection in many cancers (37, 38). As far as we know, BMI is related to postoperative complications of tumor in literature reports. Patients with low BMI are prone to suffer complications such as poor incision healing, due to poor nutrition status. In addition, when serious complications occur, there may rise more mortality due to poor tolerance. Patients with high BMI are at higher risk of complications such as lung infection and deep vein thrombosis due to poor activity or high blood lipid levels (39, 40). NLR is an indicator of immune status and infection in tumor microenvironment. In many literature reports, NLR can predict infection, anastomotic fistula and other complications. Meanwhile, in our study, it was also found that patients with high NLR are at high risk of postoperative complications, mainly anastomotic fistula, pulmonary infection and catheter infection. Therefore, we believe that BMI can reflect the nutritional status and wound healing ability of tumor patients after surgery, but cannot completely predict the postoperative complications of esophageal cancer. Therefore, compared with BMI, NLR can predict the occurrence of non-operative complications after esophageal cancer more exactly.

In this study, we analyzed the $_{pre}NLR$, $_{D0}NLR$ and $_{D1}NLR$ and found that the $_{pre}NLR$ was most significant indicator for the occurrence of complications. We consider that the NLR after operation is likely highly influenced by the inflammatory reaction, and thus, it is unable to accurately indicate the condition of the patient. Our univariate analysis revealed that complications after esophagectomy are related to BMI, ASA grade, operation time, intraoperative blood loss and tumor stage. For patients undergoing thoracic surgery, postoperative rehabilitation exercise is important for promoting lung function recovery and can reduce complications such as pneumonia. Patients with high BMI have difficulty reaching effective cough and sputum production and performing early activities, and thus, these patients are likely to develop pneumonia and deep vein thrombosis. Because the operation time is much longer for esophagectomy than for other surgeries and because single lung ventilation is used, anesthesia can aggravate injury to the body, especially the lung, and is more likely to cause pneumonia and other complications.

Overall, this study has some limitations. We need to perform multicenter observational studies to prove that the $_{pre}NLR$ is an objective indicator of complications after esophagectomy, and it may be much more appropriate to introduce reference indicators such as CRP level and interleukin levels for

comparison. Then, we can proceed with survival analysis and prognostic assessment. Additionally, we can find whether non-infection complications are associated with poor prognosis.

Importantly, in most cases, the indicators are present long before the complications can be identified. Therefore, we can use these indicators as early predictive markers. As esophagectomy is a complicated and traumatic procedure, more careful evaluation and intervention are needed to improve the postoperative outcomes. ERAS is a patient-centered, surgeon-led protocol combining anesthesia, nursing, nutrition and psychology. During recent years, ERAS has obtained much attention in the field of cancer resection (41, 42). ERAS can benefit patients by reducing the discomfort of tube detention, promoting quicker recovery to the physiological status, and reducing hospital stay duration and cost. ERAS is not commonly implemented in esophagectomy because of the complexity of the surgical procedure and high morbidity associated with postoperative complications, which have limited the progress in esophagectomy.

In the treatment of traditional mode, patients need to wait for about 1 week after radical surgery for esophageal carcinoma that they can get through eating liquid, removing the chest tube and gastric tube, that is lack of individual treatment differences. However, the patients expected to have good recovery do not need 1 week of fasting, why can't we help that patients recover from surgery more quickly. According to the concept of ERAS, early removing the gastric tube and chest tube, early eating through the mouth can improve the comfort of patients, shorten the length of hospital stay, reduce the cost of treatment, faster recovered from surgery. But perfortming the implement ERAS such as early remove the chest tube and the gastic tube will not benefit for that patients with anastomotic fistula and infection to recovery, it can even pose a fatal risk, increasing complications and mortality. According to our opinion, we hope that NLR can be used to select that patients with esophageal cancer who are suitable for ERAS, so as to facilitate the rapid recovery safely. In the experimental design, we have excluded surgical complications such as bleeding and chylous leakage, patients with high NLR and unsuitable for ERAS will be delayed for feeding and removing the chest tube, in case of avoid serious chest infection or even death due to blind eating and chest tube removal.

The primary factors that influence the time to oral feeding and tube removal are pneumonia, anastomotic leakage and pleural effusion. If we can detect the indications for complications, we can identify patients undergoing esophagectomy who are suitable for ERAS, and this can significantly enhance recovery and reduce the cost after surgery; additionally we can implement early interventions to address postoperative complications.

REFERENCES

1. Pennathur A, Gibson MK, Jobe BA, Luketich JD. Oesophageal carcinoma. *Lancet*. (2013) 381:400–12. doi: 10.1016/S0140-6736(12)60643-6
2. Takeuchi H, Miyata H, Gotoh M, Yuko K, Hideo B, Wataru K, et al. A risk model for esophagectomy using data of 5354 patients included in a Japanese

CONCLUSION

The $preNLR$ as an early predictor of complications can reduce postoperative mortality and improve survival rates. Herein, we consider $preNLR$ can be used as inclusion criteria for enhanced recovery after surgery.

DATA AVAILABILITY STATEMENT

The original contributions presented in the study are included in the article/Supplementary Material, further inquiries can be directed to the corresponding author/s.

ETHICS STATEMENT

The studies involving human participants were reviewed and approved by Navy Military Medical University. The patients/participants provided their written informed consent to participate in this study.

Written informed consent was obtained from the individual(s) for the publication of any potentially identifiable images or data included in this article.

AUTHOR CONTRIBUTIONS

BWS, LX conceived and designed the study. FY and YDH were responsible for clinical data collection. CGL and HZC analyzed the data. BWS, LX, CX G wrote the manuscript and all authors have read and approved the final version of manuscript. All authors contributed to the article and approved the submitted version.

FUNDING

This work was supported by the National Natural Science Foundation of Shanghai (20ZR1456200), Natural Science Foundation of Shanghai (19ZR1456400) and Changhai Hospital Youth Cultivation Fund (2021JCQN16).

ACKNOWLEDGMENTS

We appreciated Fu Yang from Department of Thoracic Surgery, Shanghai First People's Hospital, Shanghai Jiao Tong University School of Medicine, Yudong Han from Department of Thoracic Surgery, Affiliated Hospital of Qingdao University for clinical case collection and statistical analysis.

nationwide web-based database. *Ann Surg*. (2014) 260:259–66. doi: 10.1097/SLA.0000000000000644

3. Kassis ES, Kosinski AS, Ross Jr P, Koppes KE, Donahue JM, Danie VC, et al. Predictors of anastomotic: an analysis of the society of thoracic surgeons general thoracic database. *Ann Thorac Surg*. (2013) 96:1919–26. doi: 10.1016/j.athoracsurg.2013.07.119

4. Adamina M, Kehlet H, Tomlinson GA, Anthony JS, Conor PD. Enhanced recovery pathways optimize health outcomes and resource utilization: a meta-analysis of randomized controlled trials in colorectal surgery. *Surgery*. (2011) 149:830–40. doi: 10.1016/j.surg.2010.11.003
5. Spanjersberg WR, Reurings J, Keus F, van Laarhoven CJHm. Fast track surgery versus conventional recovery strategies for colorectal surgery. *Cochrane Database Syst Rev*. (2011) (2):CD007635. doi: 10.1002/14651858.CD007635.pub
6. ERAS Compliance Group. The impact of enhanced recovery protocol compliance on elective colorectal cancer resection: results from an international registry. *Ann Surg*. (2015) 261:1153–9. doi: 10.1097/SLA.0000000000001029
7. Markar SR, Karthikesalingam A, Low DE. Enhanced recovery pathways lead to an improvement in postoperative outcomes following esophagectomy: systematic review and pooled analysis. *Dis Esophagus*. (2015) 28:468–75. doi: 10.1111/dote.12214
8. Schmidt HM, El Lakis MA, Markar SR, Hubka M, Low DE. Accelerated recovery within standardized recovery pathways after esophagectomy: a prospective cohort study assessing the effects of early discharge on outcomes, readmissions, patient satisfaction, and costs. *Ann Thorac Surg*. (2016) 102(3):931–9. doi: 10.1016/j.athoracsur.2016.04.005
9. Findlay JM, Gillies RS, Millo J, Sgromo B, Marshall REK, Maynard ND. Enhanced recovery for esophagectomy: a systematic review and evidencebased guidelines. *Ann Surg*. (2014) 259:413–31. doi: 10.1097/SLA.0000000000000349
10. Munitiz V, Martinez-de-Haro LF, Ortiz A, Ruiz-de-Angulo D, Ruiz-de-Angulo D, Pastor P, et al. Effectiveness of a written clinical pathway for enhanced recovery after transthoracic (Ivor Lewis) oesophagectomy. *Br J Surg*. (2010) 97:714–8. doi: 10.1002/bjs.6942
11. Rubinkiewicz M, Witowski J, Su M, Major P, Pędzwiatr M. Enhanced recovery after surgery (ERAS) programs for esophagectomy. *J Thorac Dis*. (2019) (Suppl 5):S685–S91. doi: 10.21037/jtd.2018.11.56
12. Balkwill F, Mantovani A. Inflammation and cancer: back to Virchow? *Lancet*. (2001) 357(9255):539–45. doi: 10.1016/S0140-6736(00)04046-0
13. Coussens LM, Werb Z. Inflammation and cancer. *Nature*. (2002) 420(6917):860–7. doi: 10.1038/nature01322
14. Proctor MJ, Morrison DS, Talwar D, Balmer SM, Fletcher CD, O'Reilly DSJ, et al. A comparison of inflammation-based prognostic scores in patients with cancer: a glasgow inflammation outcome study. *Eur J Cancer*. (2011) 47(17):2633–41. doi: 10.1016/j.ejca.2011.03.028
15. Proctor MJ, Talwar D, Balmer SM, O'Reilly DSJ, Foulis AK, Horgan PG, et al. The relationship between the presence and site of cancer, an inflammation-based prognostic score and biochemical parameters. Initial results of the Glasgow Inflammation Outcome Study. *Br J Cancer*. (2010) 103(6):870–6. doi: 10.1038/sj.bjc.6605855
16. Gomez D, Morris-Stiff G, Toogood GJ, Lodge JPA, Rajendra Prasad K. Impact of systemic inflammation on outcome following resection for intrahepatic cholangiocarcinoma. *J Surg Oncol*. (2008) 97(6):513–8. doi: 10.1002/jso.21001
17. Erturk M, Cakmak HA, Surgit O, Celik O, Aksu HU, Akgul O, et al. Predictive value of elevated neutrophil to lymphocyte ratio for long-term cardiovascular mortality in peripheral arterial occlusive disease. *J Cardiol*. (2014) 64(5):371–6. doi: 10.1016/j.jjcc.2014.02.019
18. Sato H, Tsubosa Y, Kawano T. Correlation between the pretherapeutic neutrophil to lymphocyte ratio and the pathologic response to neoadjuvant chemotherapy in patients with advanced esophageal cancer. *World J Surg*. (2012) 236:617–22. doi: 10.1007/s00268-011-1411-1
19. Walsh SR, Cook EJ, Goulder F, Justin TA, Keeling NJ. Neutrophil-lymphocyte ratio as a prognostic factor in colorectal cancer. *J Surg Oncol*. (2015) 91(3):181–4. doi: 10.1002/jso.20329
20. Pollard T, Celi LA, Shalhoub J. The association between the neutrophil-to-lymphocyte ratio and mortality in critical illness: an observational cohort study. *Crit Care*. (2015) 19(19):13. doi: 10.1186/s13054-014-0731-6
21. Agha RA, Fowler AJ, Barai I, Orgill DP, PROCESS Group. Preferred reporting of case series in surgery; the PROCESS guidelines. *International Journal of Surgery*. (2016) 36(Pt A): 319–23. doi: 10.1016/j.ijsu.2016.10.025
22. Rice TW, Blackstone EH, Rusch VW. 7th Edition of the AJCC cancer staging manual: esophagus and esophagogastric junction. *Ann Surg Oncol*. (2010) 17(7): 1721–4. doi: 10.1245/s10434-010-1024-1
23. Surviving Sepsis Campaign. International guidelines for management of sepsis and septic shock: 2016. *Intensive Care Med*. (2017) 43(3):304–77. doi: 10.1007/s00134-017-4683-6
24. Vashist YK, Loos J, Dedow J, Tachezy M, Uzunoglu G, Kutup A, et al. Glasgow prognostic score is a predictor of perioperative and long-term outcome in patients with only surgically treated esophageal cancer. *Ann Surg Oncol*. (2018) 18(4):1130–8. doi: 10.1245/s10434-010-1383-7
25. Gu XB, Tian T, Tian XJ, Zhang XJ. Prognostic significance of neutrophil-to-lymphocyte ratio in non-small cell lung cancer: a meta-analysis. *Sci Rep*. (2019) 5:12493. doi: 10.1038/srep12493
26. Fridlender ZG, Sun J, Kim S, Kapoor V, Cheng G, Ling L, et al. Polarization of tumor-associated neutrophil phenotype by TGF-beta: "N1" versus "N2" TAN. *Cancer Cell*. (2009) 16:183. doi: 10.1016/j.ccr.2009.06.017
27. O'Callaghan DS, O'Donnell D, O'Connell F, O'Byrne KJ. The role of inflammation in the pathogenesis of non-small cell lung cancer. *J Thorac Oncol*. (2010) 5(12): 2024–36. doi: 10.1097/JTO.0b013e3181f387e4
28. Grenader T, Waddell T, Peckitt C, Oates J, Starling N, Cunningham D, et al. Prognostic value of neutrophil-to-lymphocyte ratio in advanced oesophago-gastric cancer: exploratory analysis of the REAL-2 trial. *Ann Oncol*. (2016) 27(4):687–92. doi: 10.1093/annonc/mdw012
29. Hsu J-T, Liao C-K, Le P-H, Chen T-H, Lin C-J, Chen J-S, et al. Prognostic value of the preoperative neutrophil to lymphocyte ratio in resectable gastric cancer. *Medicine (Baltimore)*. (2015) 94(39):e1589. doi: 10.1097/MD.00000000000001589
30. Bazzi WM, Tin AL, Sjoberg DD, Bernstein M, Russo P. The prognostic utility of preoperative neutrophil-to-lymphocyte ratio in localized clear cell renal cell carcinoma. *Can J Urol*. (2016) 23(1):8151–4. PMID: 26892055
31. Diakos CI, Charles KA, McMillan DC, Clarke SJ. Cancer-related inflammation and treatment effectiveness. *Lancet Oncol*. (2014) 15(11): e493–e503. doi: 10.1016/S1470-2045(14)70263-3
32. Cruz SM, Balkwill FR. Inflammation and cancer: advances and new agents. *Nat Rev Clin Oncol*. (2015) 12(10):584–96. doi: 10.1038/nrclinonc.2015.105
33. Booka E, Takeuchi H, Nishi T. The impact of postoperative complications on survivals after esophagectomy for esophageal cancer. *Medicine (Baltimore)*. (2015) 94(33):e1369. doi: 10.1097/MD.0000000000001369
34. Mohri Y, Tanaka K, Toyama Y. Impact of preoperative neutrophil to lymphocyte ratio and postoperative infectious complications on survival after curative gastrectomy for gastric cancer: a single institutional cohort study. *Medicine (Baltimore)*. (2016) 95(11):e3125. doi: 10.1097/MD.0000000000003125
35. Vulliamy P, McCluney S, Mukherjee S. Postoperative elevation of the neutrophil: lymphocyte ratio predicts complications following esophageal resection. *World J Surg*. (2016) 40(6):1397–403. doi: 10.1007/s00268-016-3427-z
36. Huang Y, Sun Y, Peng P. Prognostic and clinicopathologic significance of neutrophil-to-lymphocyte ratio in esophageal squamous cell carcinoma: evidence from a meta-analysis. *Onco Targets Ther*. (2017) 23(10):1165–72. doi: 10.2147/OTT.S126637
37. Te Riele RJLM, Dronkers EAC, Wieringa MH. Influence of anemia and BMI on prognosis of laryngeal squamous cell carcinoma: development of an updated prognostic model. *Oral Oncol*. (2018) 78:25–30. doi: 10.1016/j.oraloncology.2018.01.001
38. Westhoff E, Witjes JA, Fleshner NE. Body mass index, diet-related factors, and bladder cancer prognosis: a systematic review and meta-analysis. *Bl Cancer*. (2018) 4(1):91–112. doi: 10.3233/BLC-170147
39. Hirano Y, Kaneko H, Konishi T. Impact of body mass index on major complications, multiple complications, in-hospital mortality, and failure to rescue following esophagectomy for esophageal cancer: a nationwide inpatient database study in Japan. *Ann Surg*. (2021). doi: 10.1097/SLA.0000000000005321. [Epub ahead of print]
40. Gooszen JAH, Eshuis WJ, Blom RLGM. The effect of preoperative body mass index on short-term outcome after esophagectomy for cancer: a nationwide

- propensity score-matched analysis. *Surgery*. (2022) 172(1):137–44. doi: 10.1016/j.surg.2022.01.003.
41. Rogers LJ, Bleetman D, Messenger DE. The impact of enhanced recovery after surgery (ERAS) protocol compliance on morbidity from resection for primary lung cancer. *J Thorac Cardiovasc Surg*. (2018) 155(4):1843–52. doi: 10.1016/j.jtcvs.2017.10.151
 42. Aarts MA, Rotstein OD, Pearsall EA. Postoperative ERAS interventions have the greatest impact on optimal recovery: experience with implementation of ERAS across multiple hospitals. *Ann Surg*. (2018) 267(6):992–7. doi: 10.1097/SLA.0000000000002632

Conflict of Interest: The authors declare that the research was conducted in the absence of any commercial or financial relationships that could be construed as a potential conflict of interest.

Publisher's Note: All claims expressed in this article are solely those of the authors and do not necessarily represent those of their affiliated organizations, or those of the publisher, the editors and the reviewers. Any product that may be evaluated in this article, or claim that may be made by its manufacturer, is not guaranteed or endorsed by the publisher.

Copyright © 2022 Shi, Xu, Gong, Yang, Han, Chen and Li. This is an open-access article distributed under the terms of the Creative Commons Attribution License (CC BY). The use, distribution or reproduction in other forums is permitted, provided the original author(s) and the copyright owner(s) are credited and that the original publication in this journal is cited, in accordance with accepted academic practice. No use, distribution or reproduction is permitted which does not comply with these terms.